

KnitNet Pattern

Painted lace scarf

A PATTERN BY SALLY MELVILLE

SKILL LEVEL

Recommended for intermediate knitters, skilled in working complex st patterns from instructions or a chart.

FINISHED MEASUREMENTS

24 X 137 cm/ 9½ X 54 ins after blocking.

Note: Scarf will stretch considerably after blocking. Before blocking it will measure approx 18 to 19 cm/ 7 to 7½ ins.

MATERIALS AND TOOLS

- Three 50g/1¾oz skeins (each approx 161m/ 176yds) of Koigu PAINTER'S PALETTE PREMIUM MERINO fingerling weight (100% wool) in color #P619 gold or P321 brown.
- 3.25mm needles OR whichever needles you require to produce the gauge given below.

Note: Scarf ends with 4-row garter st border plus cast off row, and very little yarn remains. To be sure you have enough yarn to work final border, you can pre-measure; it takes approx 3 times the width of a row to work 1 row.

GAUGE

25 sts and 40 rows = 10cm/ 4ins over lace pattern after blocking.

STITCH PATTERN

AUTUMN LEAF LACE

(WORKED OVER 18 + 1 STS)

Row 1: *P1, k2tog, k6, yo, k1, yo, k6, ssk; rep from * to last st, p1.

Row 2: K1, *p17, k1, rep from * to end of row.

Row 3: *P1, k2, k2tog, yo, ssk, k2, yo, k1, yo, k2, k2tog, yo, ssk, k2; rep from * to last st, p1.

Row 4: K1, *p3, k1, p9, k1, p3, k1; rep from * to end of row.

Row 5: *P1, k1, k2tog, yo, p1, yo, ssk, k5, k2tog, yo, p1, yo, ssk, k1; rep from * to last st, p1.

Row 6: K1, *p2, k3, p7, k3, p2, k1; rep from * to end of row.

Row 7: *K1, yo, ssk, p3, yo, ssk, k3, k2tog, yo, p3, k2tog, yo; rep from * to last st, k1.

Row 8: P1, *p2, k4, p5, k4, p3; rep from * to end of row.

Row 9: *K1, yo, k1, ssk, p3, yo, ssk, k1, k2tog, yo, p3, k2tog, k1, yo; rep from * to last st, k1.

Row 10: P1, *p3, k4, p3, k4, p4; rep from * to end of row.

Row 11: *K1, yo, k2, ssk, p3, yo, sl 1 k-wise, k2tog, pssso, yo, p3, k2tog, k2, yo; rep from * to last st, k1.

Row 12: P1, *p4, k9, p5; rep from * to end of row.

Row 13: *K1, yo, k3, ssk, p7, k2tog, k3, yo; rep from * to last st, k1.

Row 14: P1, *p5, k7, p6; rep from * to end of row.

Row 15: *K1, yo, k4, ssk, p5, k2tog, k4, yo; rep from * to last st, k1.

Row 16: P1, *p6, k5, p7; rep from * to end of row.

Row 17: *K1, yo, k5, ssk, p3, k2tog, p5, yo; rep from * to last st, k1.

Row 18: P1, *p6, k3, p8; rep from * to end of row.

Row 19: *K1, yo, k6, ssk, p1, k2tog, k6, yo; rep from * to last st, k1.

Row 20: P1, *p8, k1, p9; rep from * to end of row.

Row 21: *K1, yo, k2, k2tog, yo, ssk, k2, p1, k2, k2tog, yo, ssk, k2, yo; rep from * to last st, k1.

Row 22: P1, *p4, (k1,p3) 3 times, p2; rep from * to end of row.

Row 23: *K3, k2tog, yo, p1, yo, ssk, k1, p1, k1, k2tog, yo, p1, yo, ssk, k2; rep from * to last st, k1.

Row 24: P1, *p3, k3, p2, k1, p2, k3, p4; rep from * to end of row.

Row 25: *K2, k2tog, yo, p3, k2tog, yo, k1, yo, ssk, p3, yo, ssk, k1; rep from * to last st, k1.

Row 26: P1, *p2, k4, p5, k4, p3; rep from * to end of row.

Row 27: *K1, k2tog, yo, p3, k2tog, k1, (yo,k1) twice, ssk, p3, yo, ssk; rep from * to last st, k1.

Row 28: P1, *p1, k4, p7, k4, p2; rep from * to end of row.

Row 29: Note: At *beg* of this row, work k2tog instead of sl1 k-wise, k2tog, pssso.

*Sl 1 k-wise, k2tog, pssso, yo, p3, k2tog, k2, yo, k1, yo, k2, ssk, p3, yo; rep from * to last 2 sts, ssk.

Row 30: K1, *k4, p9, k5; rep from * to end of row.

Row 31: *P4, k2tog, k3, yo, k1, yo, k3, ssk, p3; rep from * to last st, p1.

Row 32: K1, *k3, p11, k4; rep from * to end of row.

Row 33: *P3, k2tog, k4, yo, k1, yo, k4, ssk, p2; rep from * to last st, p1.

Row 34: K1, *k2, p13, k3; rep from * to end of row.

Row 35: *P2, k2tog, k5, yo, k1, yo, k5, ssk, p1; rep from * to last st, p1.

Row 36: K1, *k1, p15, k2; rep from * to end of row.

Rep these 36 rows for **AUTUMN LEAF LACE** pattern.

SCARF

Cast on 61 sts.

Row 1: Knit.

Row 2: Sl 1 p-wise, k to end of row.

Rows 3 and 4: As row 2.

Next row (establish pattern): Sl 1 p-wise, k2, work AUTUMN LEAF LACE pattern over next 55 sts, k3.

Work approx 500 rows as established (or to desired length), ending with 4 rows of row 2. To be sure you have enough yarn to work these final rows, pre-measure using this guide: 1 row uses a length of yarn approx 3 times the width of the knitted fabric. Cast off all sts.

SCARF (lace weight)

Work as for Painted Lace Scarf above .

Note: To make lace-weight scarf to same size, work to pattern and to gauge of 56 sts X 56 rows = 10cm (4") but with following changes. Cast on 139 sts. Work garter st border to 10 rows. Work st pat: (ALL ROWS) Sl1 p-wise, k5, work st pat over 127 sts, k6. Work to approx 708 rows or to desired length. End with 10-row garter st border.

GAUGE

56 sts and 56 rows = 10cm/ 4ins over lace pattern, using 2.25mm needles and lace-weight yarn.

Cast on 139 sts.

Work 10 rows of garter st border.

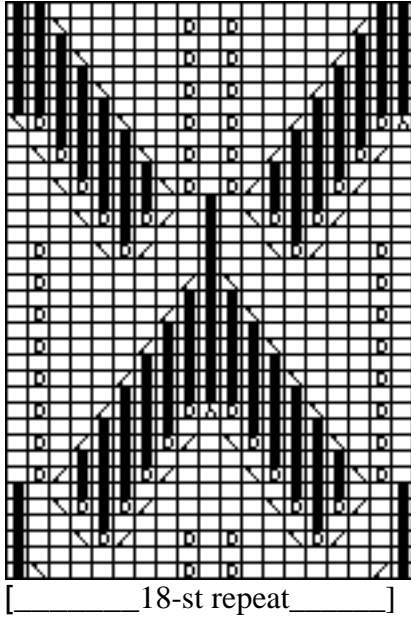
Next row (establish pattern): Sl 1 p-wise, k5, work AUTUMN LEAF LACE pattern over 127 sts, k6.

Work approx 708 rows as established (or to desired length), ending with 10-row garter stitch border. Cast off.

Autumn leaf lace legend

- st st
- rev st st
- yo or yf
- sl 1 k-wise, k2tog, pssso
- k2tog
- ssk

Autumn leaf lace chart



Note At beg row 29 only, work k2tog instead of sl 1 k-wise, k2tog, pssso.

A note about **KnitNet** patterns: You may download and print this pattern for your own use only. Please do not make copies and/or distribute copies to others. Thank you.

<i>Knitted by</i>	
<i>Started</i>	
<i>Completed</i>	
<i>Comments</i>	